



Laurel Avenue Community Primary School

0191 3868416



Newsletter

September 2015



We are really excited to welcome you all back to a new school year at Laurel Avenue. I hope everyone's summer was fantastic and enabled you to recharge your batteries ready for a new term!

2014 – 15 was such a successful year which saw the school celebrating its Ruby Anniversary, achieving good with outstanding features in the December Ofsted, being awarded the e-safety mark and achieving fabulous SATs and Year 1 Phonic Test results!! We can't wait to get stuck into a new year, filled full of fun, excitement and lots of learning!

It was wonderful to see all your children back in school today. Thank you for working in partnership with us to ensure they are in correct uniform and looking so smart and enthusiastic. We extend a special welcome to our new children and families in Nursery and Reception and to those who have transferred to us from other schools. We look forward to working with your families over the next years. A special welcome is also extended to Miss Porter who is covering Mrs Hodgson's Maternity Leave in Class 3 this year, Mrs West who will be teaching Class 3 and 4 alternative Thursdays to cover for teachers' planning, preparation and assessment time and Miss Tosney who will be working as an assistant in Class 2 and 3.

On behalf of all the staff and children, I'd like to say a huge thank you to all parents and carers who have helped and supported school in any way. I would like to thank you for your continued support, particularly in hearing your child read regularly, supporting them with homework and ensuring that they have their reading bag, PE kit and other equipment ready in school.

As always, please check our website, feel free to stop by my office, or contact me at any time via phone or e-mail if I can be of assistance.

Kind regards

Gaynor Davison



Meet NED!

It's a good time to inform new families and remind everyone else that we are a NED School!
NED is a loveable cartoon character whose name is an acronym for

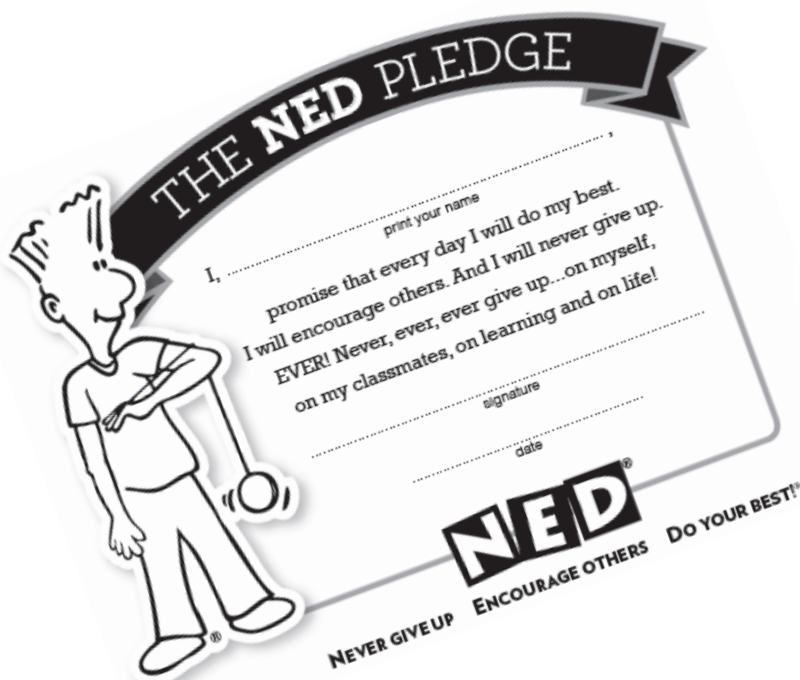
Never give up
Encourage others
Do your best



We use Ned's very important message throughout school to promote kindness and excellent progress for all children.

We hope that you will use this message at home too!

Across the year we have scheduled some NED weeks where we will give special focus to NED's message including **Never Give Up Week** which will be September 28th – October 2nd.



We will all be taking the NED pledge this week!



School Uniform

We have items of uniform and PE kits in school for you to buy if needed. Please see Mrs Lindsay or Mrs Ferguson in the school office if you would like to make any purchases.

Reminder about our School uniform...

Plain black or plain grey skirt, pinafore or trousers

Bottle green sweatshirt or cardigan

White or bottle green polo shirt

Bottle green/white summer dress

Dark coloured shoes only.

Please do not wear brightly coloured/white trainers or laces.

This is not acceptable uniform. Thank you.

Please, please, please write your child's name in all their uniform and PE kit. Thank you.

PE Kits

All children from Reception to Year 6 need a PE kit in school, including black plimsolls.



PE kit consists of dark green, black or dark blue shorts, a white or dark green t-shirt and black plimsolls.

PE Days for September

Please keep a note of when your child will need their PE kit in school

Class 1: Monday and Wednesday

Class 2: Monday and Wednesday

Class 3: Tuesday (PE kit) and Thursday (swimming kit)

Class 4: Monday and Tuesday

We recommend children bring their PE kits into school every Monday & leave them on their pegs for the week, bringing them home every Friday.



Each term, as well as receiving a topic sheet, parents/carers of children in Class 2, 3 and 4 will also receive a curriculum sheet which will show you how we are meeting the requirements of the curriculum as well as the needs and interests of your child. They are available on the website too. Please keep it safe and work through the plan with your child as they progress through their topic.

You will have already received both the topic and curriculum information for this term's topics. Look on the website if you need a new copy or ask your child's teacher.



Class 1 – Bears



Class 2 – Toys

Class 3 – Romans Rock

Class 4 – Lands and Landscapes



Our main drivers for our curriculum are – Ambition and Possibilities, Life-skills and Enterprise and Knowledge and Understanding of the World. These areas underpin the whole curriculum which we have developed and help to ensure that children leaving Laurel Avenue Community Primary School are well prepared for their continuing education and life as adults. A copy of the drivers is on the next page in this newsletter as a reminder so you can also help your child to achieve these at home.

If you have any questions regarding the curriculum, topics or the curriculum drivers please do not hesitate to contact your child's teacher or Ms Davison.

If you did not receive an overview or curriculum sheet in July, please ask your child's teacher for another copy or find them on the website –

<http://www.laurelavenue.durham.sch.uk/>

Key Drivers for our Curriculum



Our curriculum is planned around a series of themes that maximise cross-curricular links whilst ensuring there is a clear development in the learning of key skills. As a school we believe that there are three 'curriculum drivers' that personalise our curriculum and develop the whole child in order to prepare them for life beyond Primary School. These have been chosen through consultation with staff and governors, identifying the needs and interests of all of our children.

Ambition and Possibilities



- To have a life-long love of learning that inspires them to look to the future
- To have high expectations of themselves and their future
- To recognise opportunities beyond the local community
- To increase knowledge of different career choices
- To develop self-confidence and a 'have a go' attitude

Process:

- Planning to ensure opportunities to raise children's self-belief and develop a positive attitude towards risk and challenge
- Focus on ambition, identifying different jobs and possibilities through topics, visits and visitors; role models for success
- Regular opportunities to work as a team, especially Key Stage 2

Life-Skills and Enterprise



- To develop questioning and research skills, applying to a range of hands-on learning experiences
- To work effectively as a team to organise themselves and create an end product
- To work independently and be organised and ready for learning
- To listen and communicate with others
- To complete set tasks in a given period and not give up
- To have excellent attendance
- To think 'creatively' to solve problems
- To be equipped for life beyond Primary School

Process:

- Opportunities for learning through each of the 5 learning skills - reflective, relationships, resilient, resourceful and risk taking will be provided
- Through each topic, children will have opportunities, through a wider range of skills based lessons, to take ownership of their learning and direct it more
- Wider opportunities for learning beyond the curriculum to equip children with relevant life skills; health and economic well-being, cooking, e-safety
- Encouraged expectation that children attend school and are ready to learn with appropriate equipment and kit and take responsibility to be ready and prepared

Knowledge and Understanding



of the World

- To experience opportunities that broaden their horizons
- To enhance their insight into the community and world by providing meaningful learning opportunities
- To celebrate/appreciate diversity and culture at national and international level
- To widen general knowledge
- To give opportunities to pursue their own lines of enquiry

Process:

- Using the 'news flash' feature of Espresso and First News newspapers to keep in touch with current issues
- Providing opportunities through visits, local exploration and the use of visitors to ask questions and explore the diversity of people, society, culture
- Discussing local and global issues and the impact that they have
- Asking questions and research historical events in the local and wider communities

Underpinning everything we do in school is a relentless focus on the acquisition of **basic skills**, for without the ability to read and write and apply basic mathematical concepts to problems, children will be unable to access any other form of learning

Assessment

As you may be aware, the Government has made a big change to the way children are to be assessed. 'Assessment without levels' refers to the announcement from the Department for Education (DfE) that there would no longer be national curriculum levels. Children who were in Year 2 and 6 last year were the last children to be awarded a level (e.g. Level 2b or Level 4) in their end of Key Stage tests. Children in Reception will continue to be assessed against the areas of learning in the Early Years Foundation Stage Profile (EYFSP). The DfE has encouraged schools to develop their own way of assessing their children.

At Laurel Avenue, we have embraced this opportunity to review and develop our assessment procedures in a way that best suits our children. We are delighted with the system that we have chosen as it fits seamlessly into the way we plan and teach.

We have adopted a Milestone Approach where children in Year 1 and 2 will be working towards Milestone 1, children in Year 3 and 4 towards Milestone 2 and children in Year 5 and 6 towards Milestone 3. Very soon we will send out more detailed information about how our assessment scheme works and what it means in terms of your child's attainment and progress.

At Laurel Avenue, we're **tickled pink!**

We are entering our third year of using our current marking scheme which provides really effective feedback to children regarding their work. Our marking scheme was recently praised by Ofsted and all children certainly use the marking and feedback we give to help them to make progress and know what they are doing well and where they need to improve.

We thought it would be a good opportunity to remind everyone about how it works.

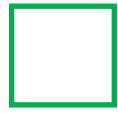
Marking in pink shows where the teacher is **tickled pink** about the achievement made by the child in that piece of work and **green marking** shows where they need to develop their work to make progress – **green for growth!**



On the following page is a copy of our marking symbols that are used in books and on homework so that you can understand what they mean and so share your child's success as you look at their books during parent's evenings and when looking through their homework books and folders.



Marking Key: **Tickled pink** and **Green for Growth**



capital letters



full stops

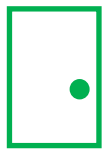
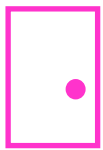
WOW

WOW

vocabulary



connectives



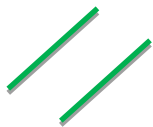
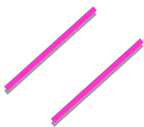
openers



finger spaces



spelling



new paragraph



grammar



handwriting



missing word



does not make sense

VF

verbal feedback



Attendance 2015 - 2016

We were really pleased that our attendance figure for 2014 – 15 was an improvement on the previous year (94.8%) at **95.5%!!** This is in line with the national average for primary school children so thank you to every family who works hard to ensure that their child/ren's attendance is the best that it can be!

In order to ensure that our overall attendance and punctuality improves during the school year 2015 - 2016, we have provided the following guidelines for parents and carers.



Here are some reminders about important attendance issues. We like to give you as much information as possible about such important issues as attendance so that you are well informed. School follows Government Policy and works very closely with our Educational Welfare Officer to provide support for all families.

so happy to see you



Holidays in Term Time

Family holidays should not be booked during school time. If parents/carers decide to take a holiday or extended leave in term time, the school will request that Children's Services issue a Penalty Notice under section 444 of the Education Act 1996.

The penalty notice is £60 per parent per child if paid within 28 days and £120 per parent per child if paid after 28 days but within 42 days. Failure to pay the Penalty Notice will result in prosecution in the Magistrates Court.

When a child has more than 20 sessions (each day = 2 sessions) unauthorised absence in a twelve week period, this will result in a warning being given and the issue of a fixed penalty notice and referral to the Educational Welfare Service.



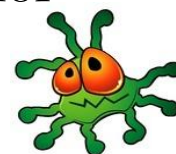
Medical Issues

Medical and dental appointments should be made **out of school time** except those children who we know have a medical care plan.

If hospital appointments have to be made in school time, appointment cards/letters must be submitted to school one week prior to the appointment and copies will be kept on your child's file. If the appointment is later in the morning, or afternoon, please bring your child into school first and then collect them to take to the appointment.



If your child has a lot of short absences due to minor illnesses, school will ask the school nurse to offer support to your family. If there are a number of regular incidences of absences due to illness, then the Educational Welfare Officer will request you provide medical evidence for every absence. Without this evidence, your child's attendance will be marked as unauthorised.



Persistent Absentees

As you know, The Department for Education announced that the threshold for Persistent Absence is now 10%. This means that if your child's attendance falls below 90%, they will be classified as a persistent absentee. So if they are absent from school for around 19 days or more across the year, they will meet this classification.

At the end of each month, your child will bring home a print out of their attendance so you can keep track of their attendance figure and know if it is in danger of dropping to near 90% or below.

Only 95% and above is acceptable.



Punctuality

All children should be on the playground for the bell ringing at 9.00 am. Children coming into school via the front door (after the bell has rung) will be logged daily and attendance procedures will be triggered if this is a frequent event. Our Educational Welfare Officer will arrange meetings to establish why punctuality is an issue.

Our lessons start right at the beginning of the day, so children late in are missing the start of their lesson. Ten minutes late a day is 50 minutes of maths lost a week which really mounts up over the year.



Whilst these sanctions may sound quite harsh, it is in line with most schools in the country. Our consistent message to you, as parents/carers, is that “Every Day Counts” and that high attendance is essential in order to ensure that all our children achieve their full potential.



Let's work hard together to reach our target of 95.7%!

I hope that you will support the school in this matter, as we are all concerned to see children fulfil their potential at school. I am sure you will agree that this can best be achieved by avoiding unnecessary absence. Our door is always open if you would like to discuss any issues including attendance and we will always do our best to help you and your family.

If you need any support with attendance or punctuality please do not hesitate to contact us or the Educational Welfare Officer for school, Diane Marlow, on 03000 269 833. Thank you.

OUTSTANDING	100% – 99%	
GOOD	98% – 97%	
SATISFACTORY	96% – 95%	2 SCHOOL WEEKS OF LOST LEARNING
UNSATISFACTORY	94% – 90%	4 SCHOOL WEEKS OF LOST LEARNING
TOTALLY UNACCEPTABLE	89% – 76%	8 SCHOOL WEEKS OF LOST LEARNING
NEGLECT	75% – 70%	12 SCHOOL WEEKS OF LOST LEARNING

Please help!

Thank you to parents/carers who park safely each day and walk with their child to the lane or gate. Unfortunately, we still continue to have a small number of parents/carers who are continuing to park unsafely.

If you bring your child/ren to school or nursery in a car, please park in the large car park and not outside the car park or in the disabled bays outside school, unless you legitimately need to use these parking spaces. These spaces need to be kept free for families who legitimately do need to use them.



If travelling by car, please use the car park and then walk your child/ren the short distance to the top of the lane when they arrive at school before 9.00 am. By stopping cars at the top of the lane to drop child/ren off, the road becomes very congested at this busy time of the day and therefore dangerous to children.

If your child walks to school alone, please encourage them to walk into school using the pavement where the crash barriers are, not on the road.

We take the safety of all children very seriously and hope that you all will be able to help us to do this.

Thank you!

Bug Club

Bug Club is a finely-levelled reading scheme, which ensures that all children can find books at exactly the right level for them.

Bug Club has recently been developed so that it can be accessed via tablets. If you have had problems in the past, please try again to log in. If you still have problems, please discuss these with your child's teacher so that we can resolve these issues. Thank you!

Reading a book online

We allocate books to your child according to their reading levels. These books will appear on their personal homepages.

Throughout the books there are quiz questions for your child to complete. To answer a question, just click on the bug icon.

Your child does not need to finish all the quiz questions in one sitting and can come back to a book later.

When your child has finished all the quiz questions in a book, he or she will earn 'Bug Points'. By reading more books, your child will earn enough points for a reward. The answers to the quiz questions will be sent back to our teacher site so that we can see how your child is progressing. We will also be able to assign more books for your child to read if the virtual book bag is running low.

When your child has finished a book, it will move to 'Books I have read' (for KS1) or 'Look again' (for KS2). Children can read these books again if they want to, or they can choose new books from 'My Books'.



Have you been using Espresso Primary at home?

Espresso Primary is an online cross-curricular service that provides video-rich resources to schools throughout the UK. It contains thousands of videos and multimedia activities, as well as a weekly news service.



For more information, please visit: www.espresso.co.uk

How to access Espresso from home

To access Espresso from home you will need a PC or Apple Mac and a connection to the internet. You can then go to <https://central.espresso.co.uk> and enter the school's username and password.

These login details are

username: student9180

password: avenue

We would not usually give out passwords in such a manner, but this is a public site with no confidential or personal information attached.



Getting started

Before you start using Espresso, read the Parents' guide. This explains what Espresso is, how to use it and how to support your child with their learning. To find the guide, select one of the Home Learning icons (from the appropriate key stage) on the left-hand side of the Espresso home page. The Parents' guide button is located in the top left-hand corner of the following page.

If the site does not work well on Internet Explorer, please try another browser such as Google Chrome.

School Admissions

The Durham County Council online admission site at www.durham.gov.uk will open on September 11th 2015. Applications for admission to Reception for September 2016 and Secondary School for September 2016 must be received by the deadlines shown in the tables below. There is also an online brochure if you would like further information about the process and available schools which is found on the Durham County Website, as well as our own. <http://www.laurelavenue.durham.sch.uk/Admission-Arrangements>

If you do not have internet access please come into school and we can either help you to use a school computer to make your application or print you a paper copy of the brochure and application form.

Timetable for applying for Primary School places for September 2016

Children born between the 1st September 2011 and the 31st August 2012 will be eligible for admission to the Reception class in September 2016.

<i>Date</i>	<i>Stage in application process</i>
<i>11 September 2015</i>	<i>Applications open</i>
<i>15 January 2016</i>	<i>Closing date for applications</i>
<i>18 April 2016</i>	<i>Offers made</i>
<i>29 April 2016</i>	<i>Deadline for parents to accept the offer of a school place</i>
<i>From 9 May 2016</i>	<i>You can ask for your child's name to be added to a school waiting list</i>

Timetable for applying for Secondary School places for September 2016

<i>Date</i>	<i>Stage in application process</i>
<i>11 September 2015</i>	<i>Applications open</i>
<i>31 October 2015</i>	<i>Closing date for applications</i>
<i>1 March 2016</i>	<i>Offers made</i>
<i>15 March 2016</i>	<i>Deadline for parents to accept the offer of a school place</i>
<i>From 23 March 2016</i>	<i>You can ask for your child's name to be added to a school waiting list</i>

Phone Numbers If you have a new mobile phone and changed your number, please ensure you send any new numbers into school so we can update our records. This is essential both for receiving texts and notifications but also for contacting you should any emergencies arise within school. **Thanks!**



Tea Club is back for children in Year 2 – Year 6, every Tuesday starting 15th September. Your child will go straight from school to Tea Club where they will have a hot meal before attending Youth Club at 4.00 pm. **All for £2!**



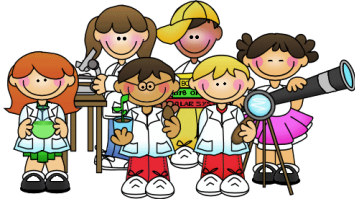
Week beginning Monday 14th September

8.30 – 9.00 am Early Birds Intervention Groups by invitation

Homework Club (Wednesdays 3.00 – 4.00 pm): Everyone Welcome

KS1 Science Club (Thursdays 3.00 – 4.00 pm): Science Club takes 8 children at one time on first come first served basis.

There will be a second group after half term.



Please watch out for letters

Thursday 10th September: Let's Get Cooking starts for Year 6

**Watch out for information about more
After School Clubs starting later in the term.**

Celebrating St Giles' Day

St Giles Church: Sunday 6th September 3.00 pm

'Games Around the Church from 3.00 pm with a 'bring your own picnic' to be followed by a 4forAll, child-friendly service.

Everyone welcome!

Reverend Alan Bartlett

St Giles Church T: 0191 384 2452

E: vicar@stgilesdurham.co.uk



What's on at Laurel Avenue Community Centre?



Tuesdays 4.00 - 5.30 pm Junior Youth Club (please note the change in time)
6 years to 12 years; under 6 years must be accompanied.

Come along and meet our new Youth Workers Chu Chu and Jemma.

Admission 50p and tuck shop available.

Admission is part of the £2 paid if children attend Tea Club.



Wednesdays 6.00 – 8.00 pm

'Lad's Group' 13 years and above, with Keely and Kate.



Thursdays 9.00 – 11.00 am is our Toddler Group session.
Very popular group, come along for a Coffee and a Chit Chat.



Also on Thursdays 5.00 – 7.00 pm 'Kerb It' Project
with Chu Chu & Jemma.

This group is for anyone aged 12 years and above.



LOOK OUT for Bingo Nights, Lunch Club and
other activities coming up!

Thinking of having a birthday party, christening or holding an event?
Our facilities are available for hire.

Please contact Claire for any further information.

Tel: 0191 3845427 or 07825956094

or see our Facebook Group - Laurel Avenue Community Association.





Wednesday 2nd September: Back to school

Monday 7th September, 9.00 am: FOLAS Meeting

Wednesday 9th September: Individual and Family Photographs

Letters about your photograph choices out today – please return by Tuesday 8th September

Thursday 10th September: Let's Get Cooking starts for Year 6

Week beginning Monday 14th September: 8.30 – 9.00 am 'Early Birds' intervention groups, Laurel Learners Homework Club (Wednesdays 3.00 – 4.00 pm) and KS1 Science Club (Thursdays 3.00 – 4.00 pm) start – please watch out for letters

Friday 25th September: Macmillan Coffee Afternoon

Week beginning 28th September: Never Give Up Week

Wednesday 7th October, 9.30 am: Harvest Festival

Monday 12th and Tuesday 13th October, 3.30 – 5.30 pm:

Parents' Evening for Reception to Year 6

Wednesday 14th October: Open Day for Nursery

Friday 23rd October: Halloween Themed Lunch

Monday 26th – Friday 30th October: Half Term

Monday 2nd November: Back to school

Monday 2nd November, 9.00 am: FOLAS Meeting

Friday 13th November: Children in Need Day with Fun Lunch Menu and Pudsey Bear Biscuits

Monday 16th – Friday 20th November: Anti-Bullying Week

Thursday 19th November: Anti-Bullying Awareness Raising Day

Monday 23rd November: School closed for Teacher Training



Week beginning 24th November: Keep Kindness Going Week

Wednesday 25th November: Non Uniform Day for Chocolate Donation

Monday 30th November, 1.30 – 3.00pm: Christmas Fayre

Friday 4th December: Film Club straight after school

Wednesday 9th December: Christmas Lunch with Parents/Carers invited

Friday 11th December, 10.00 am: Nursery and Reception

Christmas Production

Tuesday 15th December, 10.00 am: Christmas Production

Wednesday 16th December, am: Nursery Party for all Nursery children

Thursday 17th December, pm: Christmas Disco for Reception – Year 6

Friday 18th December, 9.15 am: Christmas Sing-a-long

No Star Assembly

Friday 18th December: End of Term

Spring Term starts Wednesday 6th January 2016




Important:

***Year 6 will be doing their
KS2 SATS: 9th May – 12th May 2016***

***Year 1 Phonics Tests will take place
during the week beginning
June 13th 2016***



Holiday	Closing Date	Date Re-open for Teaching Purposes
Summer 2015 (6 weeks 2 days) 	Friday 17 th July 2015	Wednesday 2 nd September 2015
Autumn Half-Term 2015 (1 week) 	Friday 23 rd October 2015	Monday 2 nd November 2015
Teacher Training Day (1 day) 	Friday 20 th November 2015	Tuesday 24 th November 2015
Christmas 2015 (2 weeks 2 days) 	Friday 18 th December 2015	Wednesday 6 th January 2016
Spring Half-Term 2016 (1 week) 	Friday 12 th February 2016	Monday 22 nd February 2016
Easter 2016 (2 weeks 1 day) 	Thursday 24 th March 2016	Monday 11 th April 2016
May Day 2016 (1 day) 	Friday 29 th April 2016	Tuesday 3 rd May 2016
Summer Half-Term 2016 (1 week) 	Friday 27 th May 2016	Monday 6 th June 2016
Teacher Training Day (1 day) 	Friday 17 th June 2016	Tuesday 21 st June 2016
Summer 2016 	Wednesday 20 th July 2016	To be determined

These dates only relate to Laurel Avenue Community Primary School.
 Each school in the area may have slightly different closing and re-opening dates.